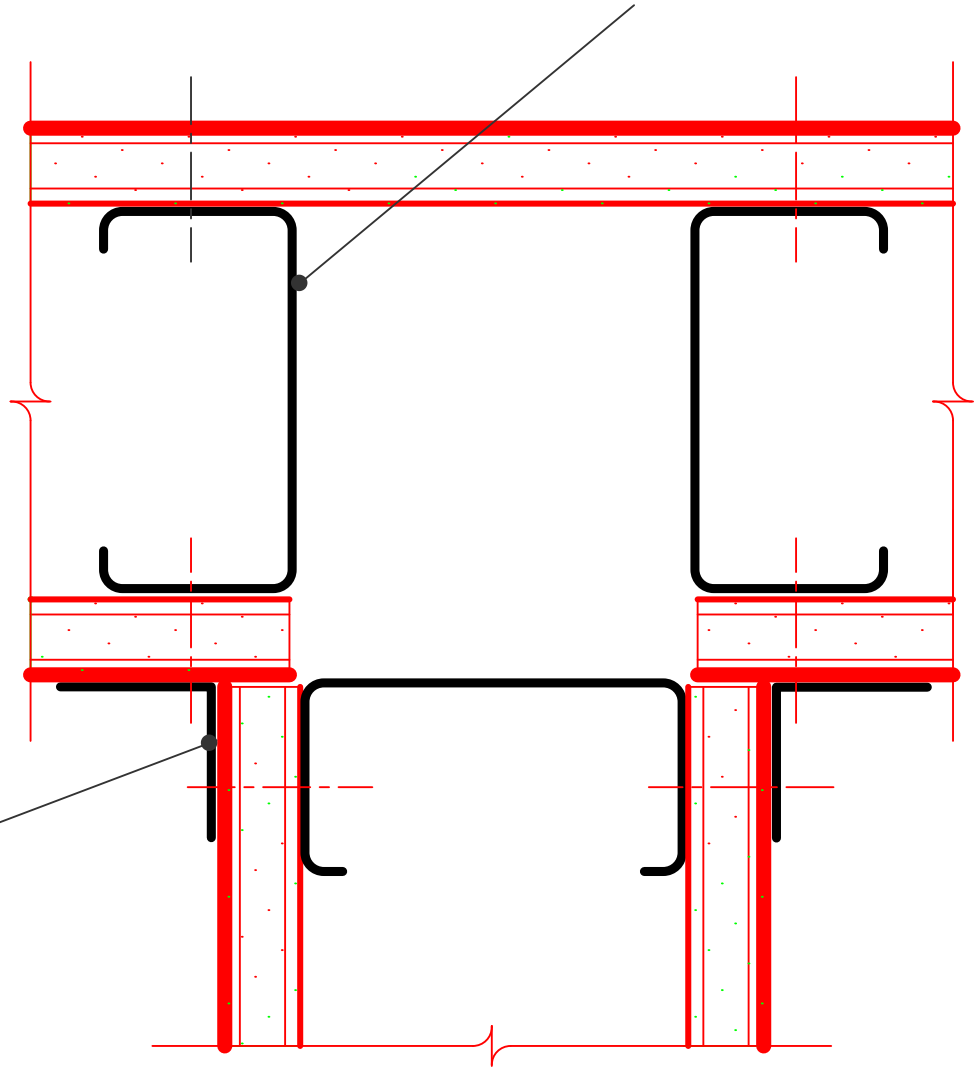
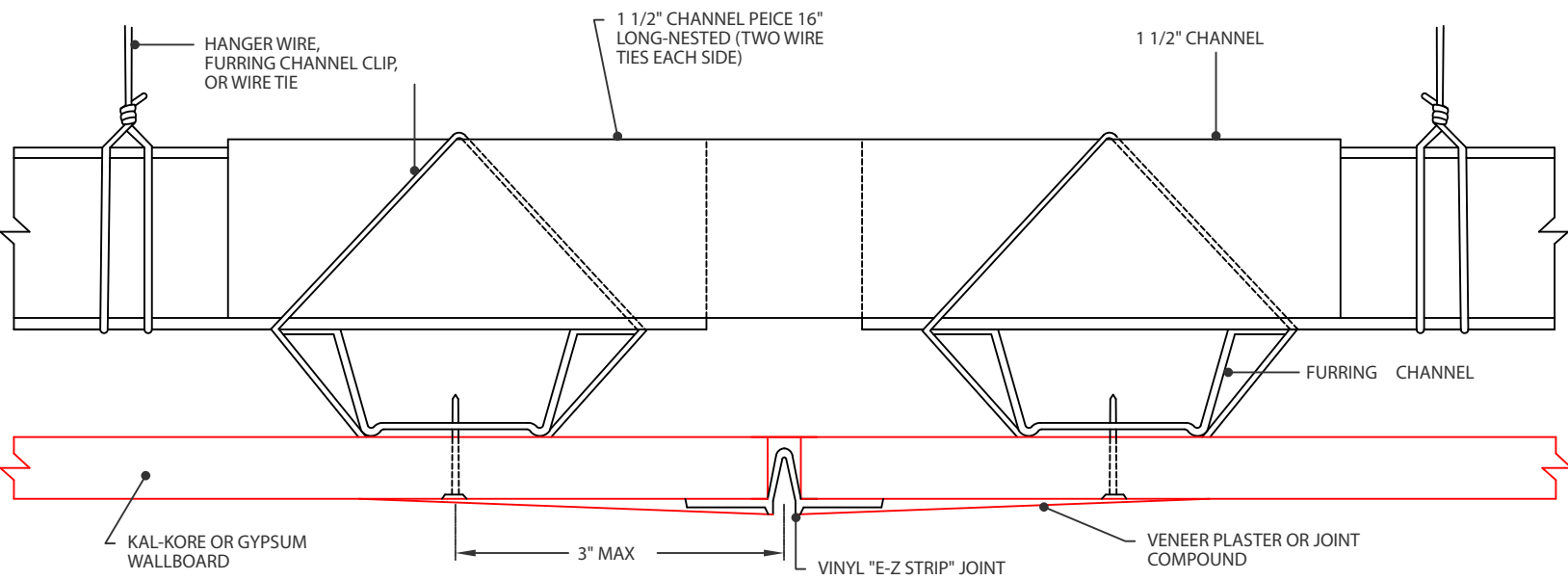


STEEL STUD

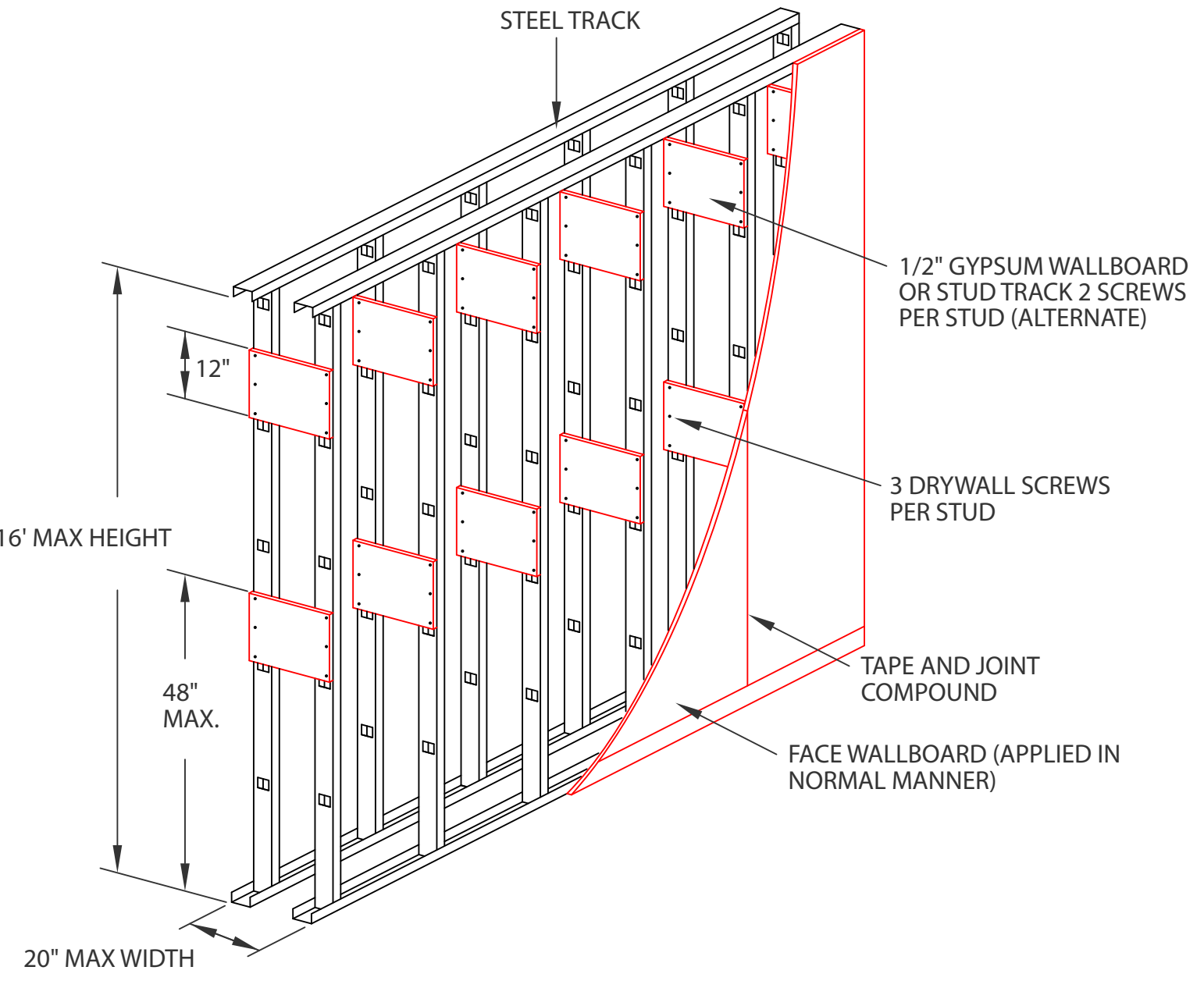


TAPE AND JOINT  
COMPOUND

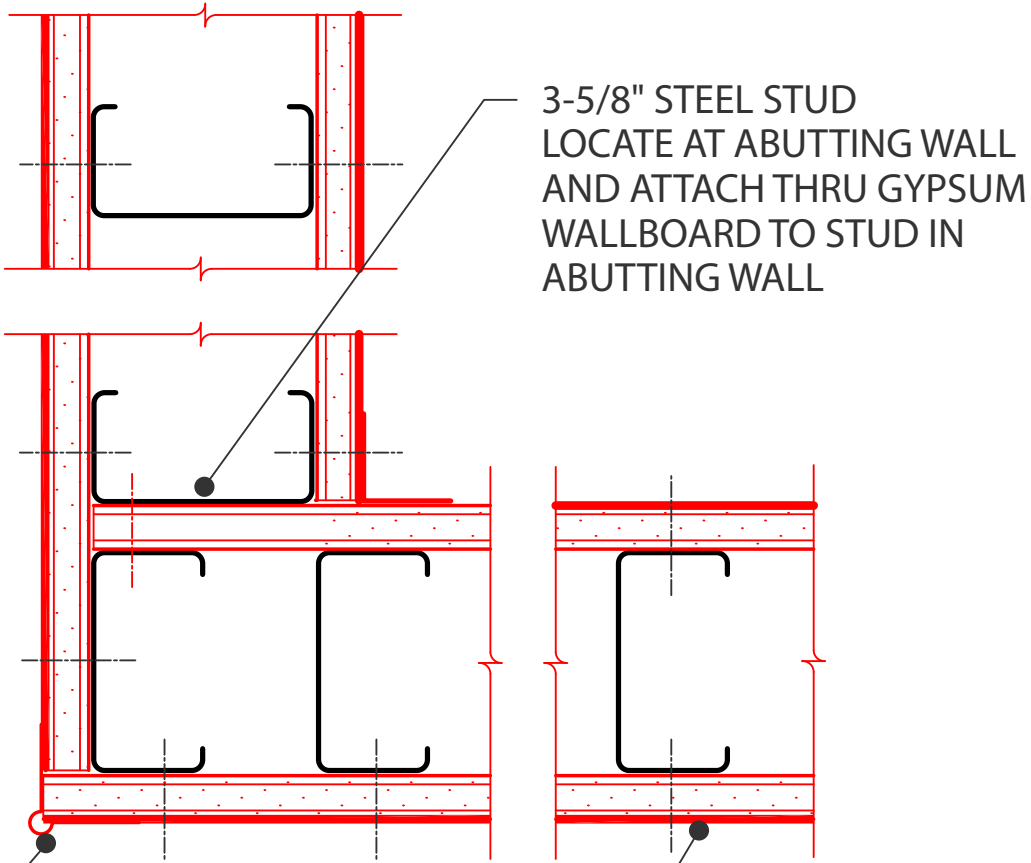
WALLBOARD STEEL STUD INTERSECTION  
(ALTERNATE)



CONTROL JOINT PARALLEL TO FURRING CHANNELS



CHASE WALL

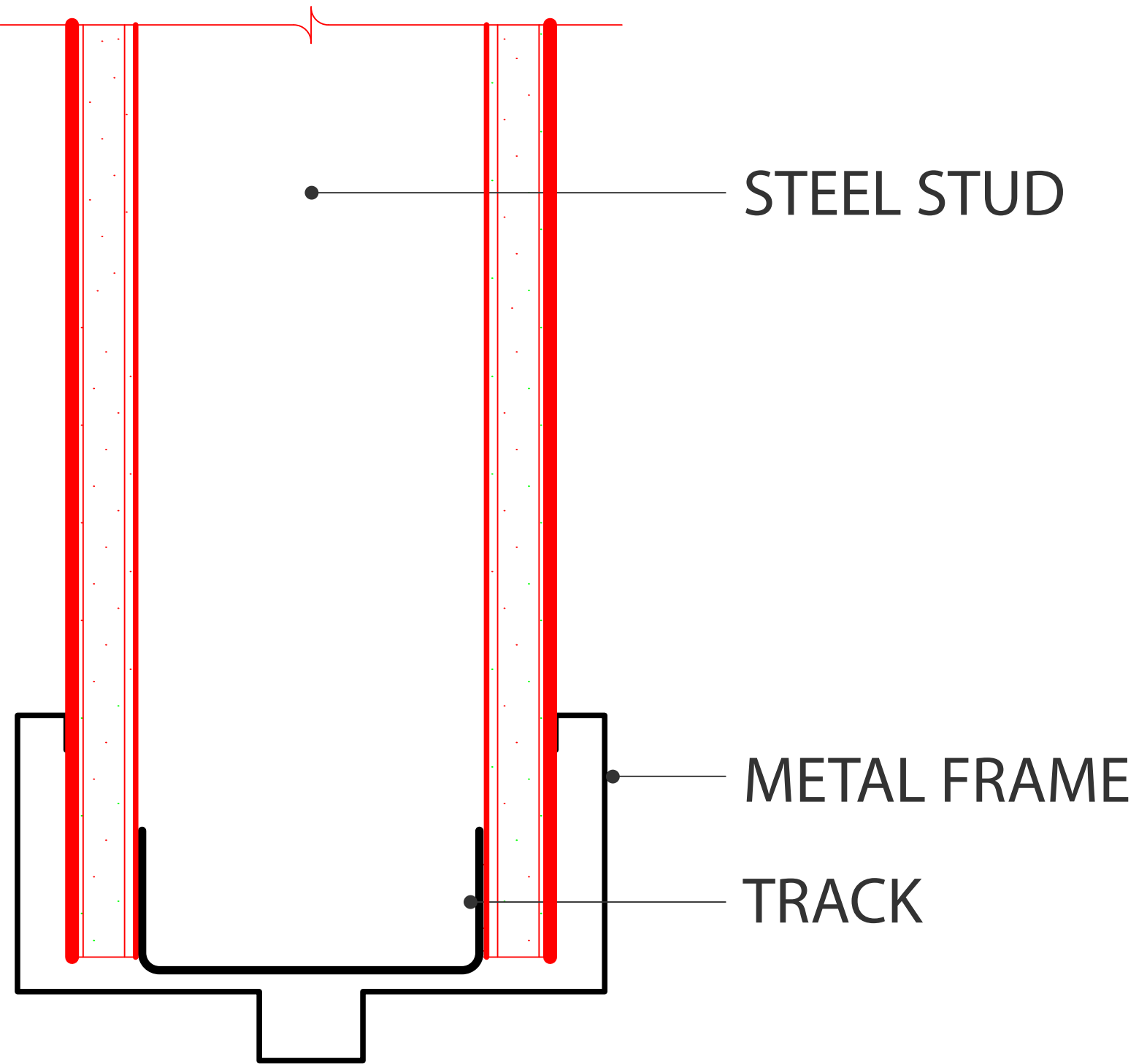


3-5/8" STEEL STUD  
 LOCATE AT ABUTTING WALL  
 AND ATTACH THRU GYPSUM  
 WALLBOARD TO STUD IN  
 ABUTTING WALL

CORNERBEAD - TYPICAL

5/8" GYPSUM WALLBOARD - NUMBER OF  
 LAYERS DETERMINED BY PARTITION TYPE

CORNER DETAIL

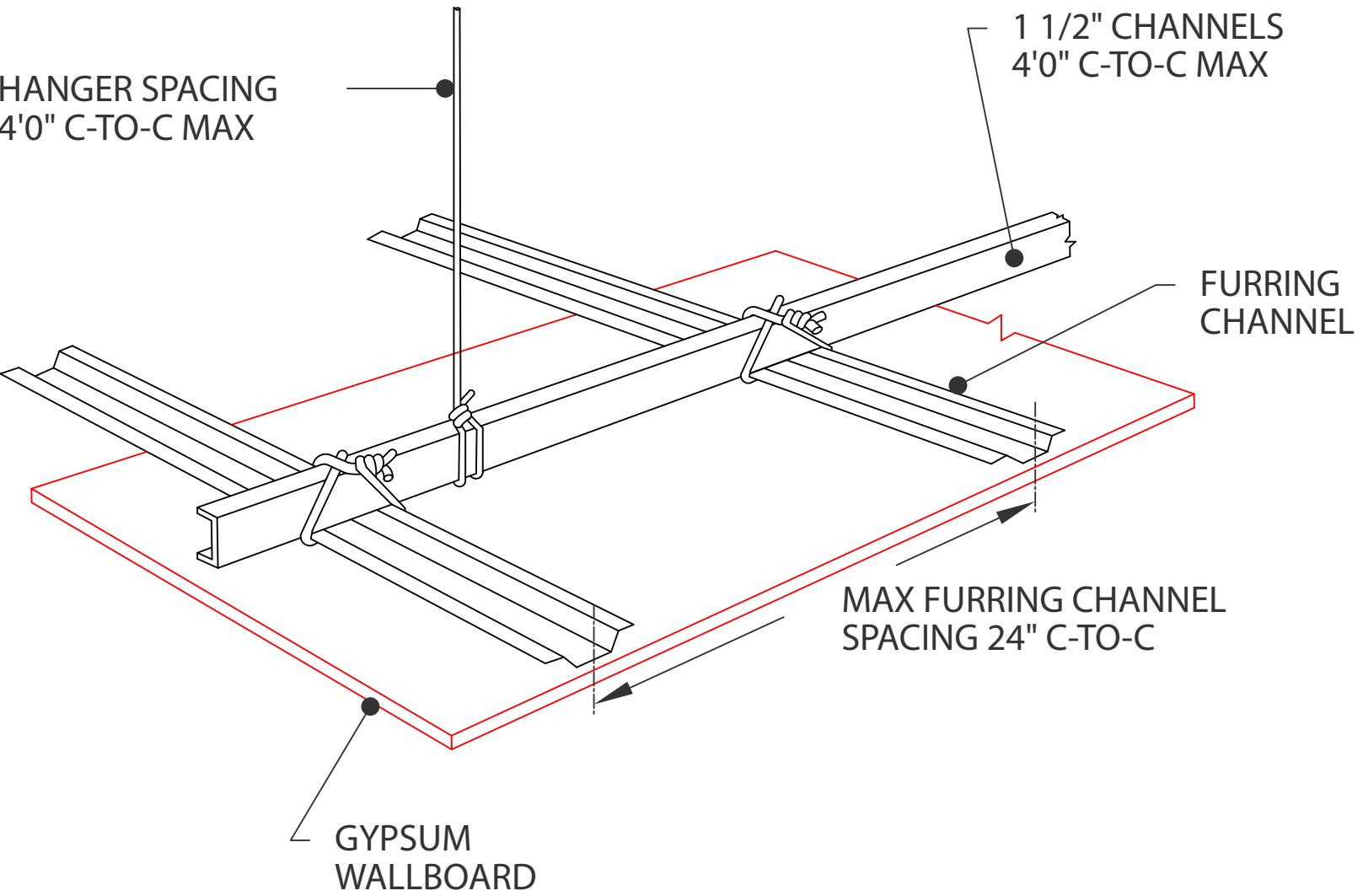


STEEL STUD

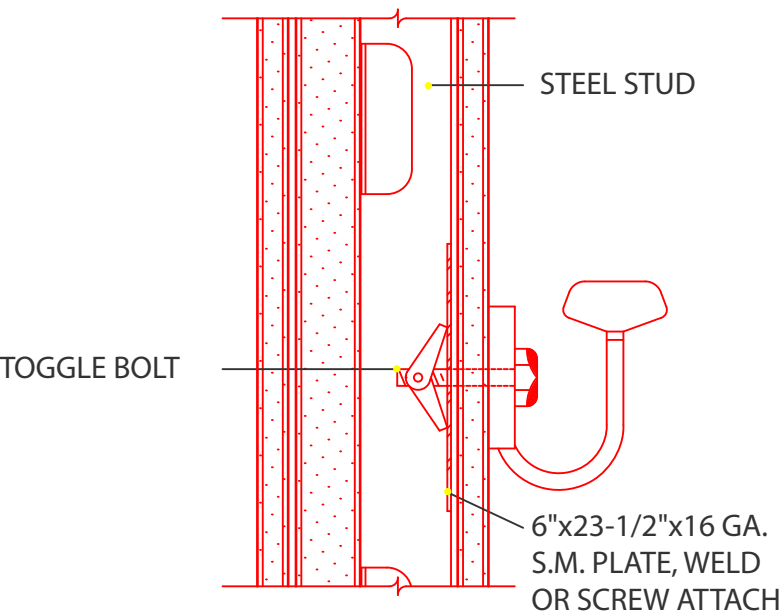
METAL FRAME

TRACK

DOOR HEAD DETAIL - METAL

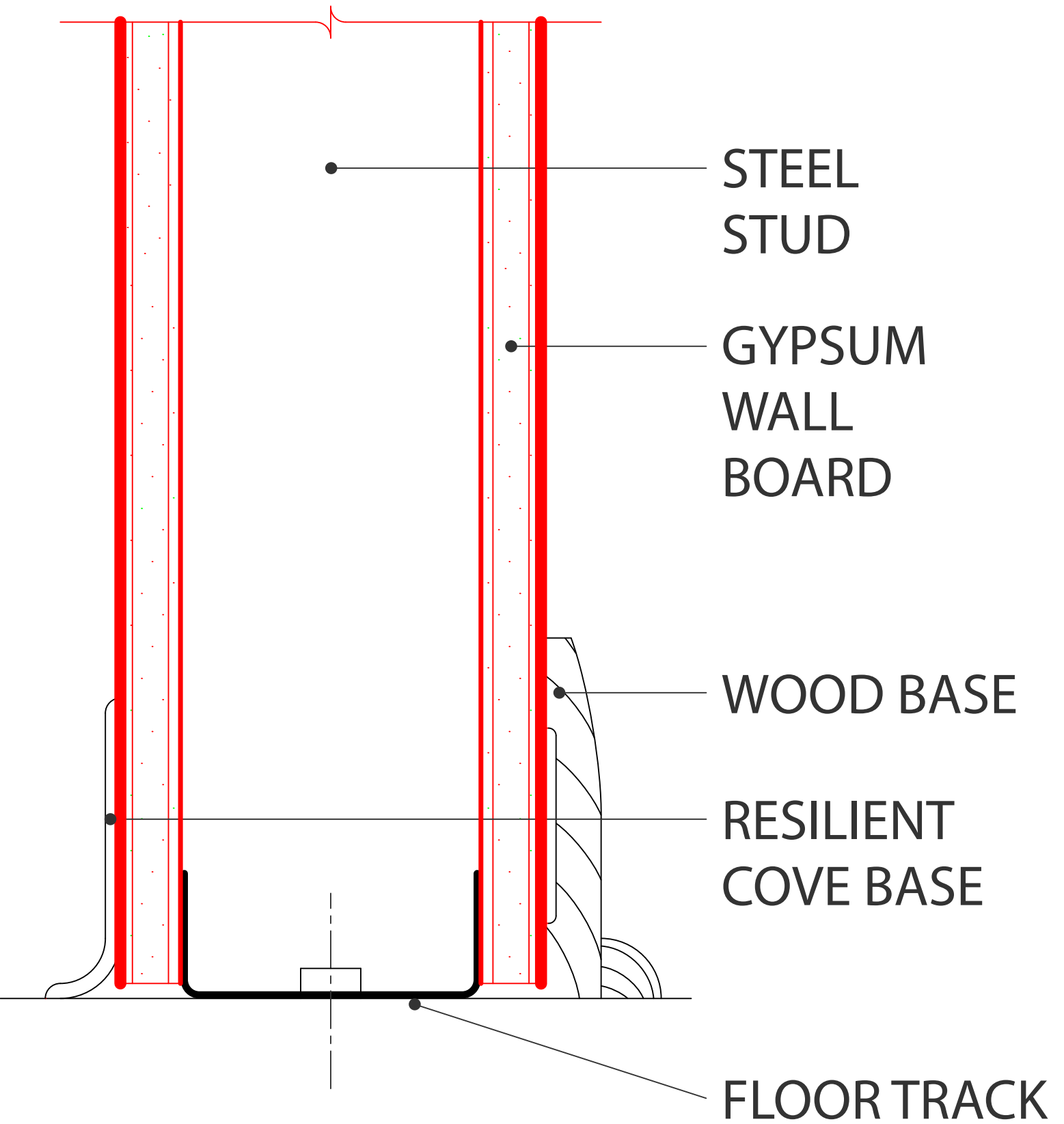


FURRING CHANNEL DETAILS



NOTE: HANDRAIL BRACKET SHALL HAVE A MINIMUM AREA OF 3.25 SQ. IN. AND MINIMUM WIDTH ALONG BOTTOM EDGE OF 1-3/8" IF RECTANGULAR, AND A MINIMUM DIAMETER OF 2-3/8" IF ROUND IN ORDER TO COMPLY WITH 200 POUND PULLOUT AND/OR COMPRESSION TESTS (NFPA 101-1985 LIFE SAFETY CODE - BRACKETS).

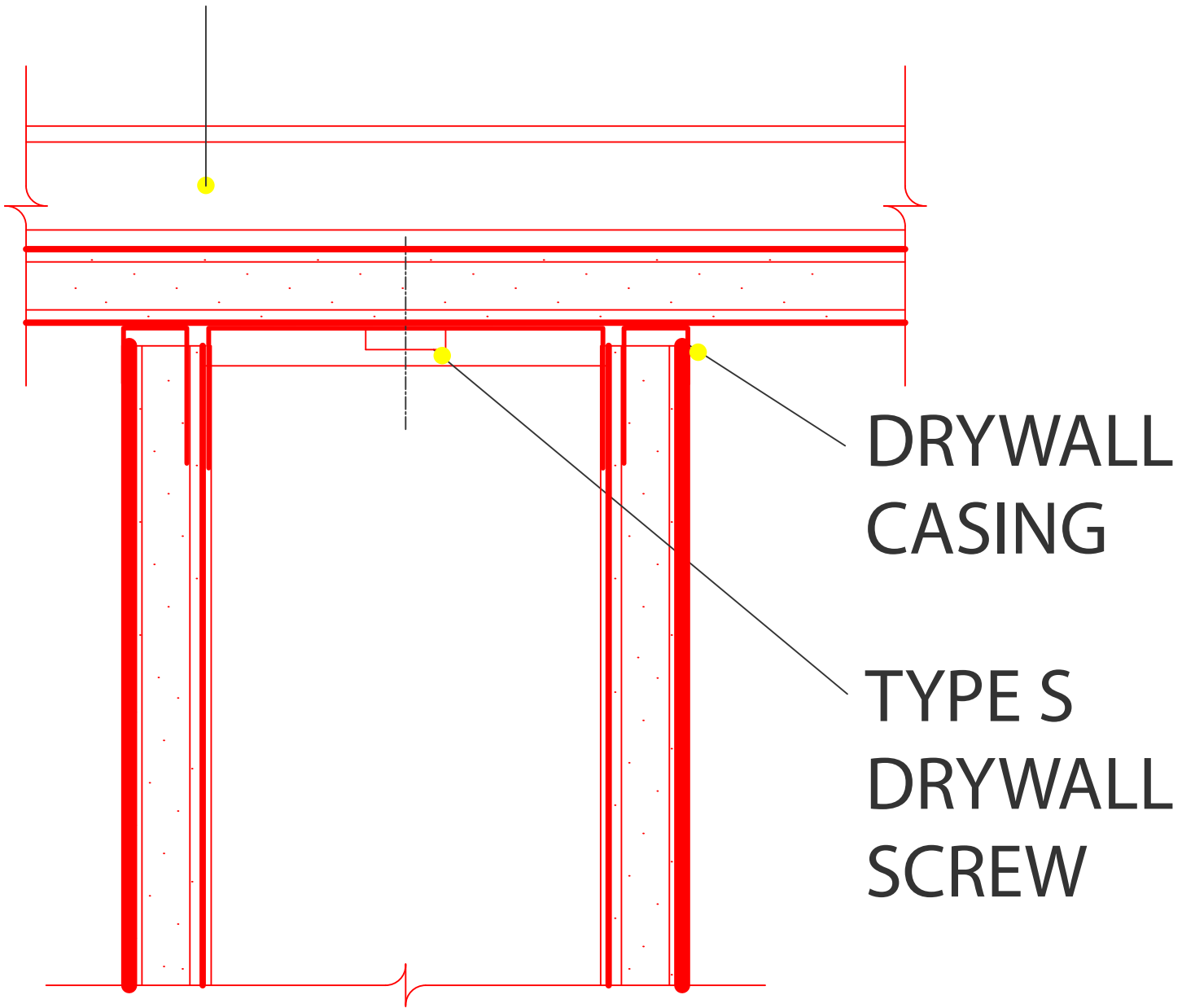
HANDRAIL SUPPORT DETAILS  
(BOLT FASTENED)



WALLBOARD PARTITION AT FLOOR



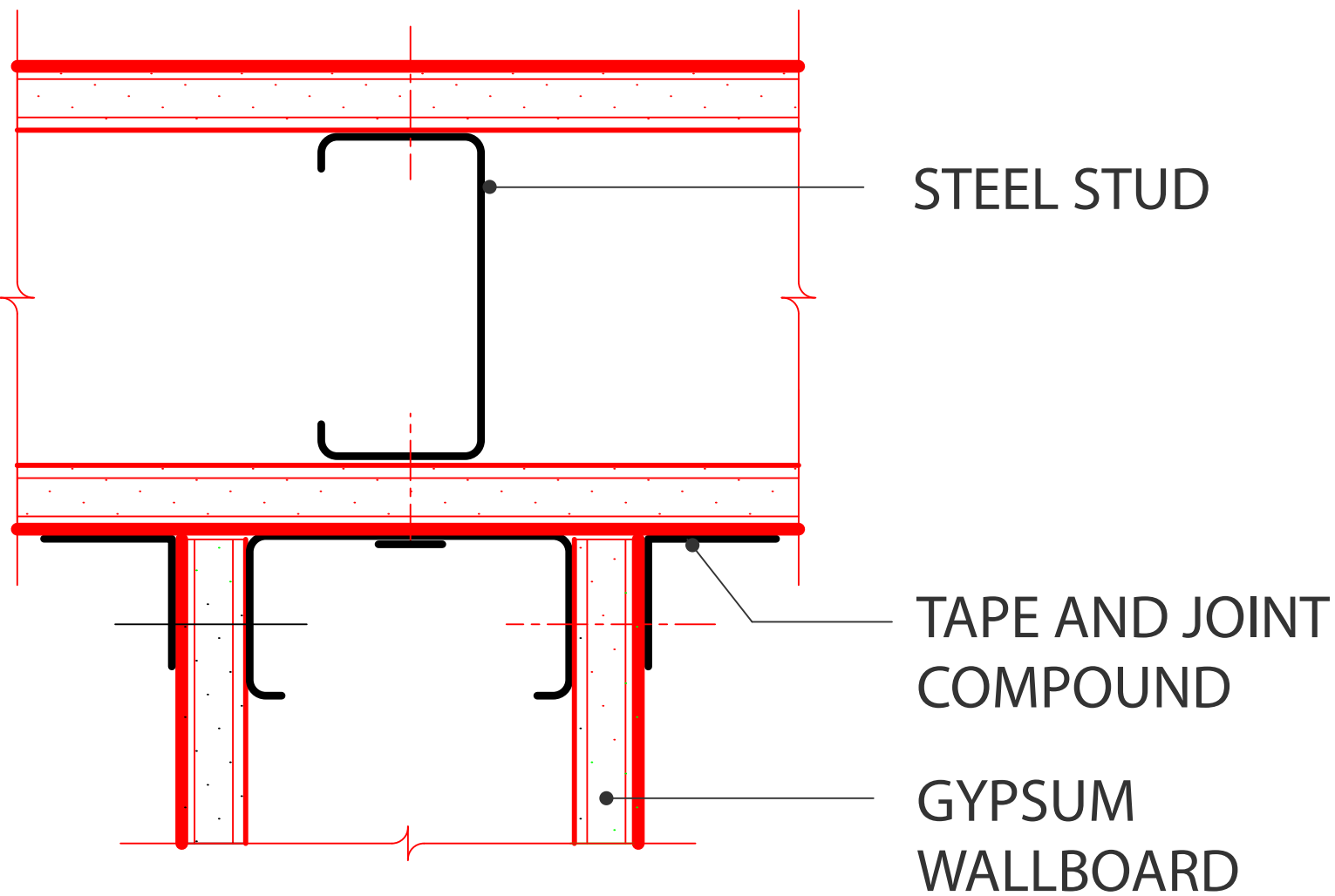
# FURRING CHANNEL



DRYWALL  
CASING

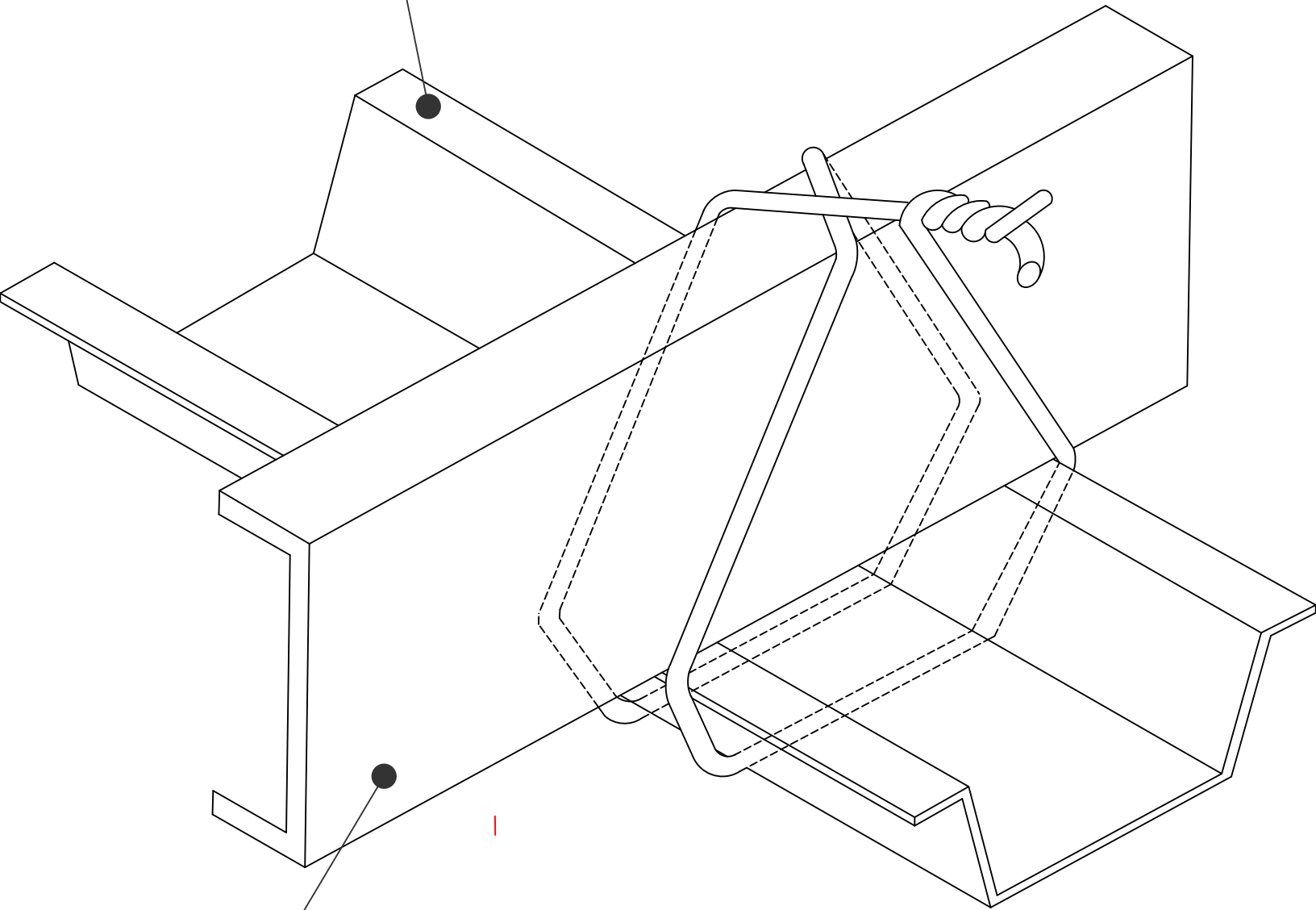
TYPE S  
DRYWALL  
SCREW

# WALLBOARD PARTITION AT FURRED CEILING



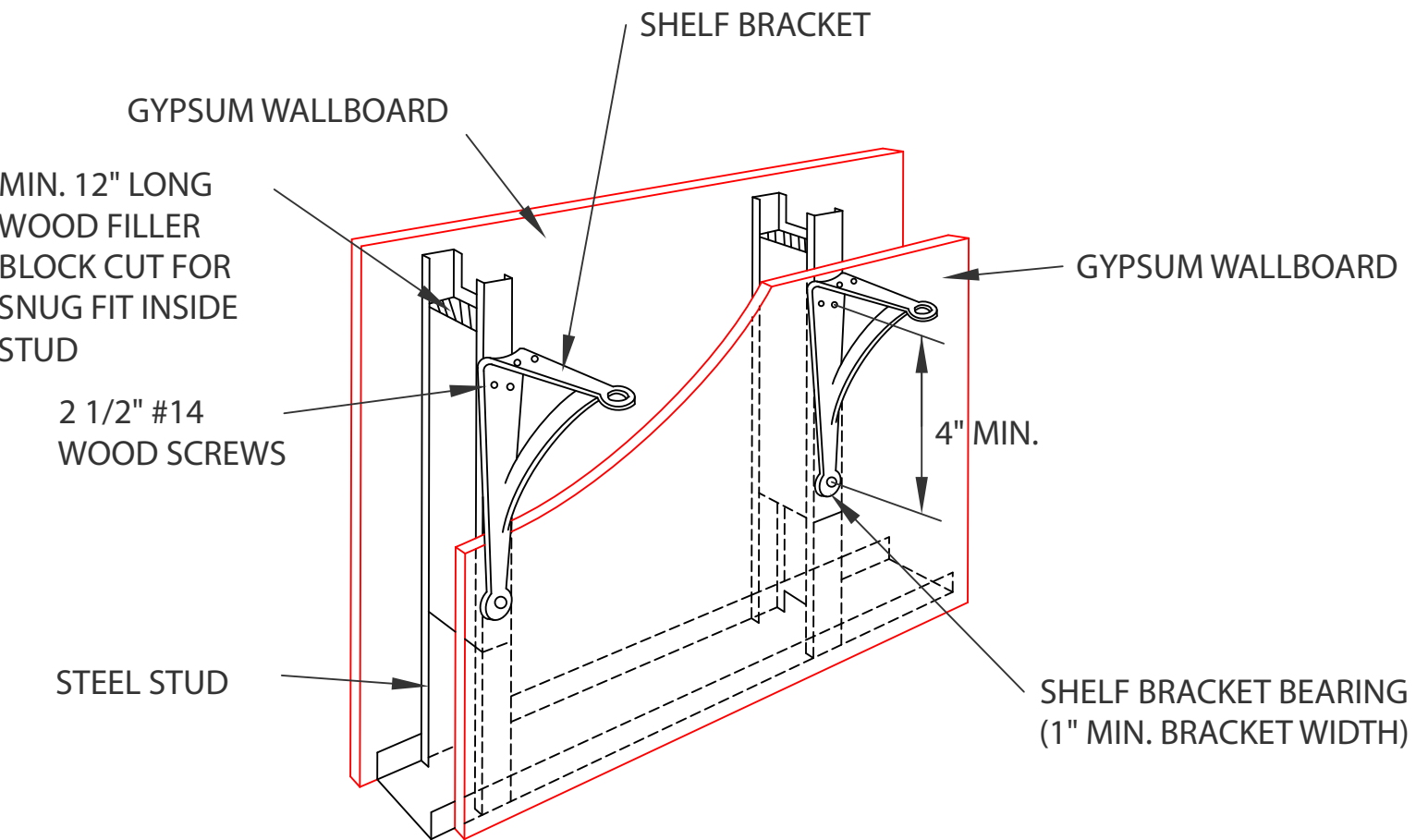
## PARTITION INTERSECTION

FURRING  
CHANNEL

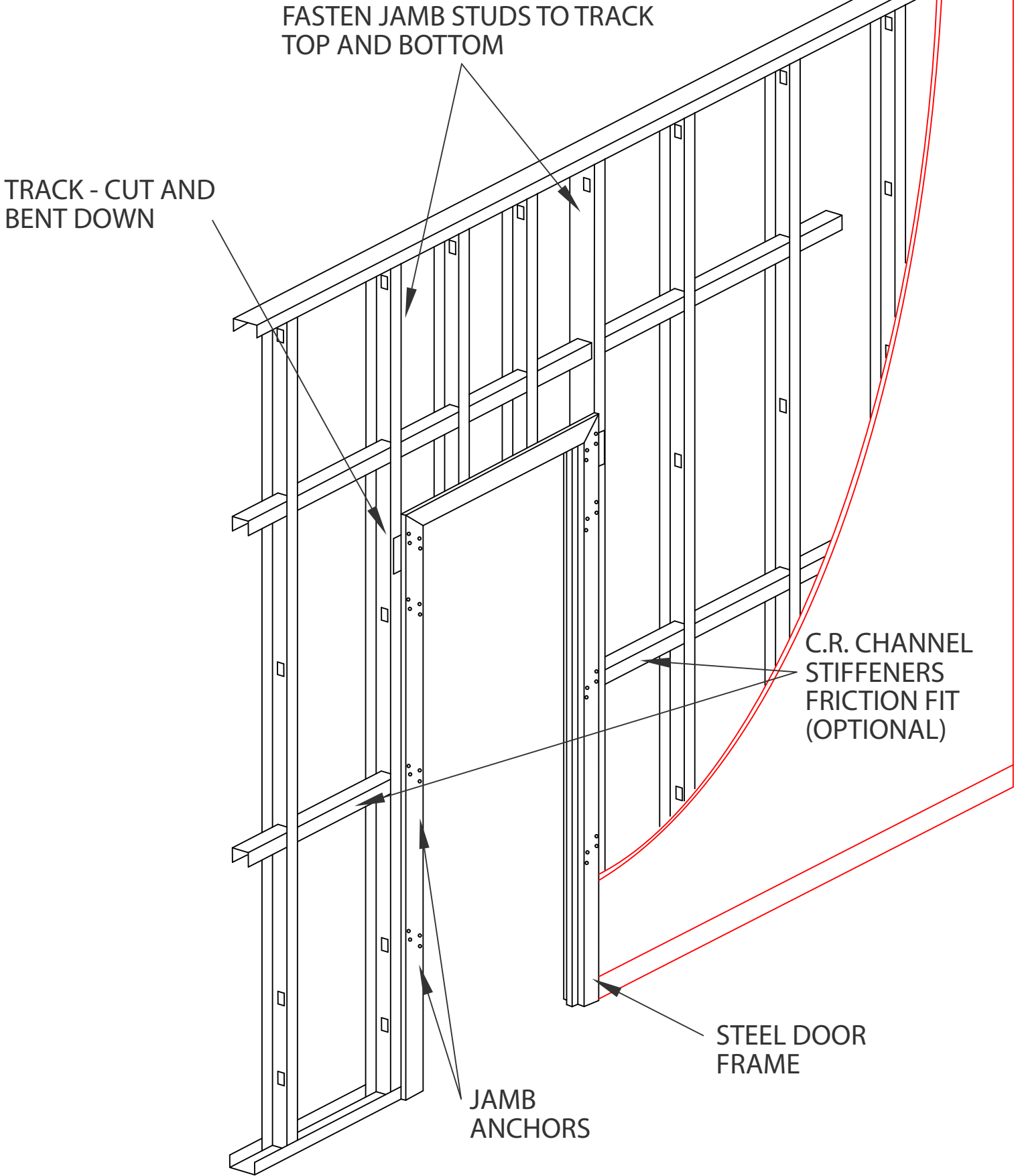


MAIN RUNNER

SADDLE TIE



SHELF BRACKET

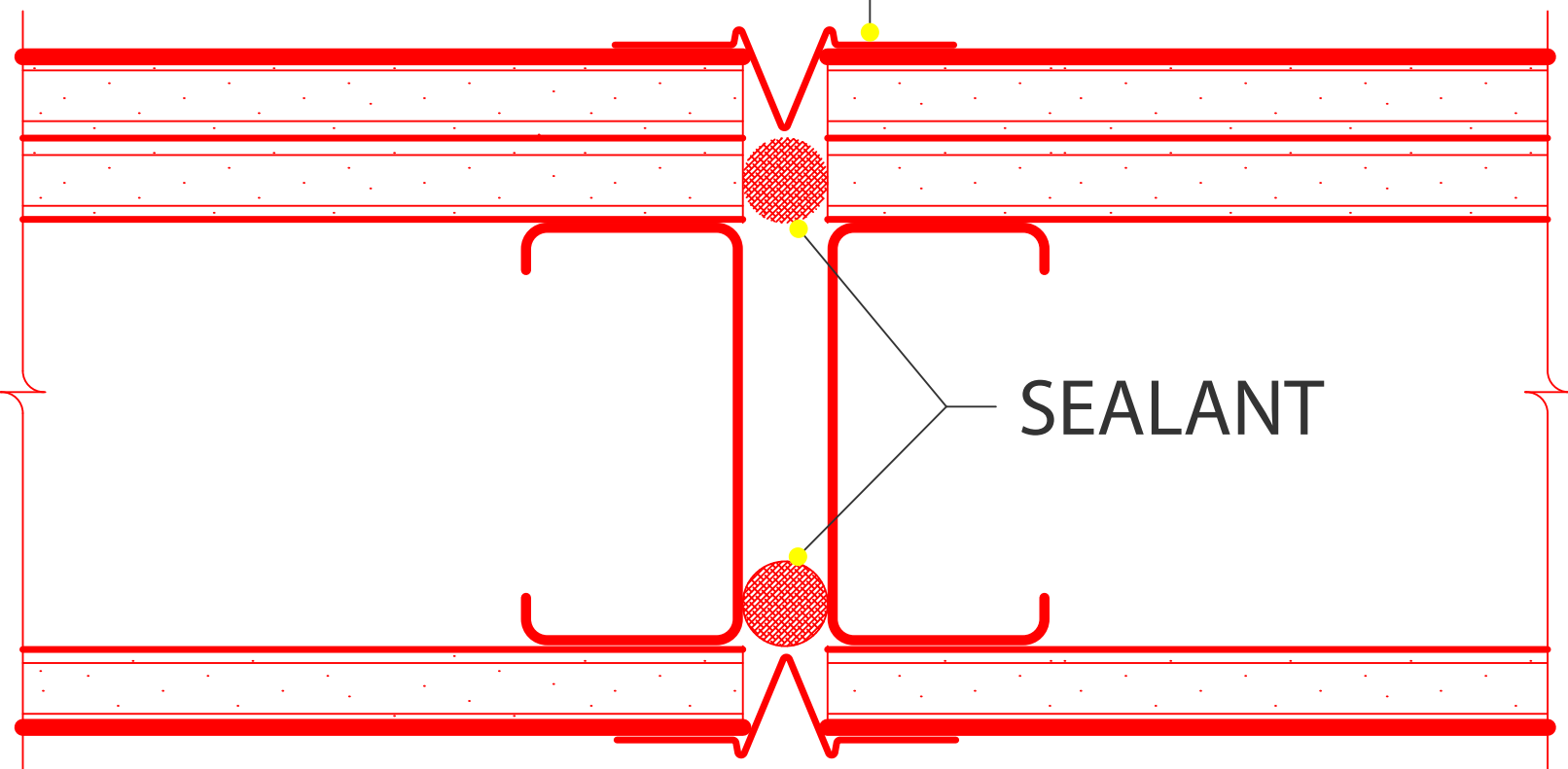


SINGLE LAYER CONSTRUCTION

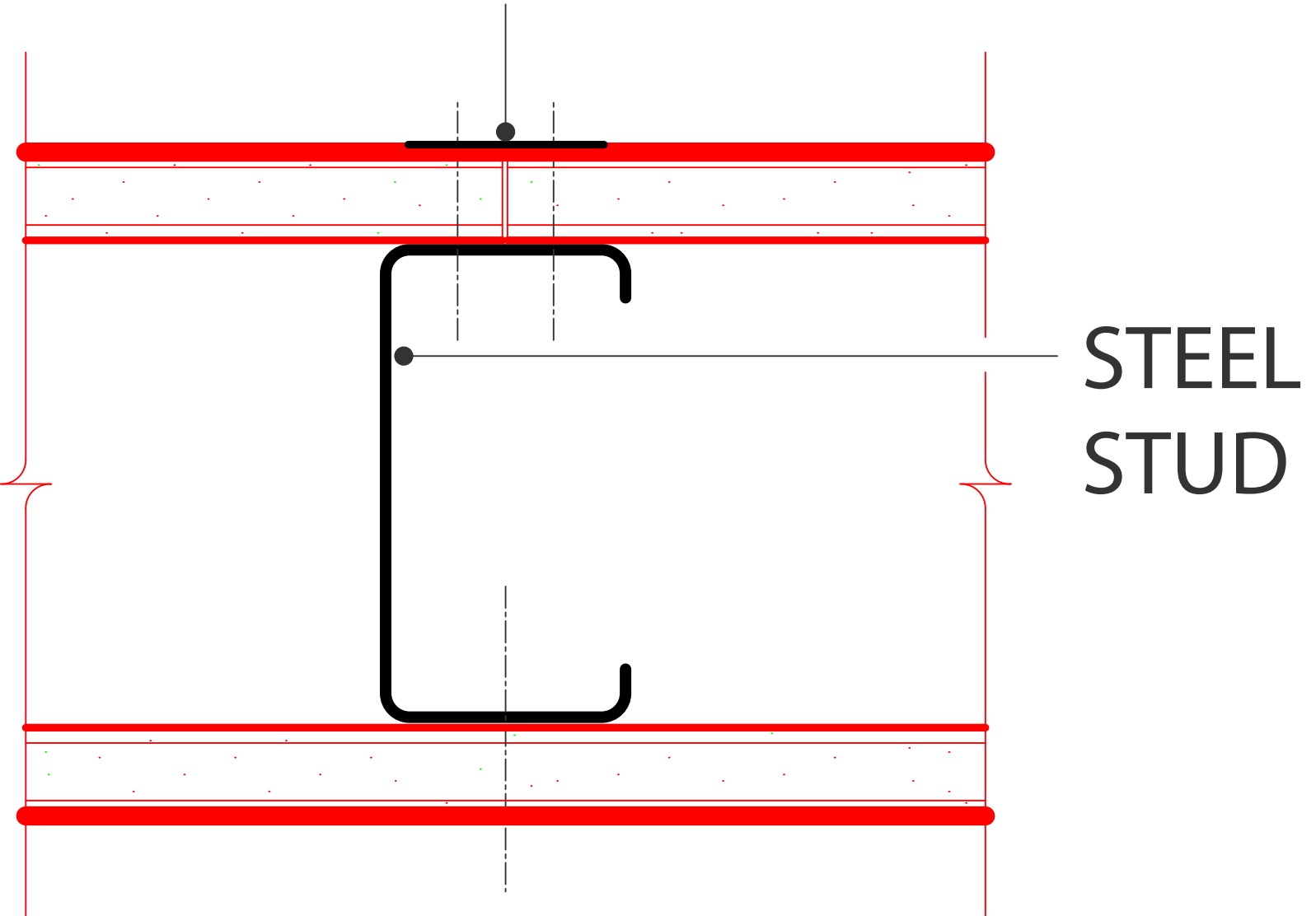
E-Z STRIP  
CONTROL JOINT

SEALANT

WALL CONTROL JOINT



# TAPE AND JOINT COMPOUND



STEEL  
STUD

WALLBOARD JOINT